

**HISTOPATHOLOGY REPORT: **EXAMPLE REPORT****

**CLINICAL NOTES:**

Histopathology.

Right mid humerus skin tumour, ?KA.

**MACROSCOPY:**

The specimen jar is unlabelled as to site, the form states right mid humerus: The specimen consists of an ellipse of skin measuring 37x15x3mm bearing an ulcerated red pink nodule measuring 16x15mm. Towards the middle there is an orientating nick at the 12 o'clock position. The 12 and 3 o'clock margins are inked black. 1LS to 3 o'clock and 2TS, block A. 3TS and 1LS to 9 o'clock, block B. 2 blocks. See Figure 1. (JF/ti)

**MICROSCOPY:**

The sections of orientated skin excision show MODERATELY DIFFERENTIATED **SQUAMOUS CELL CARCINOMA**. The carcinoma extends into the deep reticular dermis. There is no evidence of lymphovascular or perineural invasion. The squamous cell carcinoma has a keratoacanthoma-like pattern. See **Figure 1A**.

The Tumour thickness is AT LEAST 3mm

Clearance from carcinoma:

- 3 o'clock: GREATER THAN 4mm
- 6 o'clock: 1mm
- 9 o'clock: GREATER THAN 4mm
- 12 o'clock: 1.8mm
- deep: **MARGIN INVOLVED**

**CONCLUSION:**

**RIGHT MID HUMERUS, ORIENTATED SKIN EXCISION:**

- **SQUAMOUS CELL CARCINOMA (SCC)**
- **16mm**
- **DEEP MARGIN INVOLVED**

**Educational Hyperlink**

<http://www.infinitypath.com.au/doctor-education/squamous-cell-carcinoma-scc/>

**REPORTED BY:**

Dr. Adrian Russell Consultant Specialist Histopathologist

MBBS(Hons) FRCPA

Mobile: 0405 859 715

Email: Adrian.Russell@infinitypath.com.au

NATA Accreditation Number 19215

See the difference, Feel the difference, Be part of our journey



Figure 1: Right mid humerus

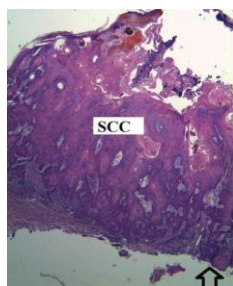


Figure 1A Right mid humerus Histology