

HISTOPATHOLOGY REPORT: **EXAMPLE REPORT**

CLINICAL NOTES:

Histology – uterine curettings
PMB
Thickened endometrium on USS
Thickened calcified curettings ?? cancer

MACROSCOPY:

Curettings: The specimen consists of tan haemorrhagic tissue fragments measuring in aggregate 30x20x8mm. All in. 1 Block. (RT/sy).

MICROSCOPY:

The sections show features consistent with **FIGO GRADE I ENDOMETRIOID ENDOMETRIAL ADENOCARCINOMA** (ARCHITECTURAL GRADE I, NUCLEAR GRADE II). There is presence of back to back endometrial glands with no intervening stroma. There are also associated squamous metaplasia and foamy macrophages present. (See Figure 1 Below)

CONCLUSION:

UTERINE CURETTINGS:

- **FEATURES CONSISTENT WITH **GRADE I ENDOMETRIOID ENDOMETRIAL ADENOCARCINOMA****

REPORTED BY:

Dr Shahin Sharifi
MD MRCP (Part 2) FRCPA
Mobile: 0451 782 722
Email: shahin.sharifi@infinitypath.com.au

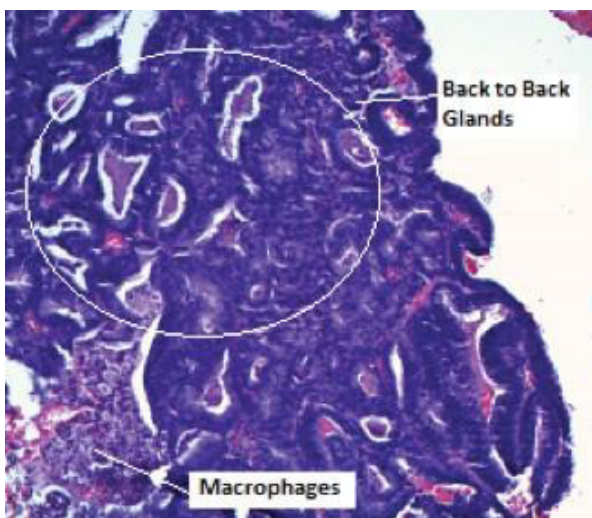


Figure 1 FIGO GRADE I ENDOMETRIOID ENDOMETRIAL ADENOCARCINOMA