

**HISTOPATHOLOGY REPORT: EXAMPLE REPORT**

**CLINICAL NOTES:**

Histology  
Left Forehead skin lesion excision  
? BCC  
Please comment on margins  
Clinic Photos. See Figure 1. See Figure 2. See Figure 3.

**MACROSCOPY:**

Skin biopsy: The specimen consists of an ellipse of skin measuring 19x8x3mm bearing an ill-defined roughened cream pink papule measuring 7x5mm. There is an orientating nick at the 12 o'clock end. The 12 and 3 o'clock margins are inked black. 1LS to 12 o'clock, 4TS and 1LS to 6 o'clock in block 1. See Figure 4. (EA/jj)

**MICROSCOPY:**

The sections of orientated skin excision show NODULAR **BASAL CELL CARCINOMA**. The carcinoma extends into the deep reticular dermis. There is no perineural invasion. See Figure 5. Clearance from carcinoma:

- 3 o'clock: 1mm
- 6 o'clock: GREATER THAN 3mm
- 9 o'clock: 1.1mm
- 12 o'clock: GREATER THAN 3mm
- deep: 1mm

**CONCLUSION:**

**LEFT FOREHEAD, ORIENTATED SKIN EXCISION:**

- **NODULAR BASAL CELL CARCINOMA (BCC)**
- **7mm**
- **EXCISION APPEARS COMPLETE**

**Educational Hyperlink**

<http://www.infinitypath.com.au/doctor-education/squamous-cell-carcinoma-scc/>

**REPORTED BY:**

Dr. InfinityPATH Consultant Specialist Histopathologist  
MBBS (Hons) FRCPA  
Mobile: 0451 000 000  
Email: infinity.path@infinitypath.com.au  
NATA Accreditation Number 19215  
See the difference, Feel the difference, Be part of our journey



Figure 1:  
Clinical Photo



Figure 2:  
Clinical Photo

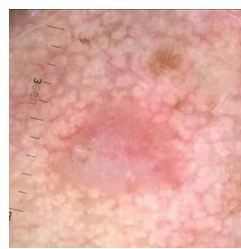


Figure 3:  
Clinical Photo



Figure 4:  
Left Forehead

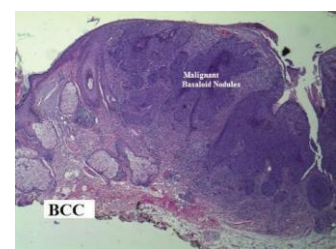


Figure 5:  
Left Forehead Histology - BCC